



Orona

Orona 3G

Aesthetic solutions





Orona 3G

Aesthetic solutions

ORONA 3G DOMO SERIES

Reference Packs

DR10	5
DR11	6
DR12	7
DR13	8
DR14	9
DR15	10
DR16	11

Selection Packs

DS10	12
DS11	13
DS12	14
DS13	15
DS14	16

ORONA 3G PUBLIC SERIES

Reference Packs

PR10	21
PR11	22
PR12	23
PR13	24
PR14	25

Selection Packs

PS10	26
PS11	27
PS12	28
PS13	29
PS14	30
PS15	31
PS16	32
PS17	33
PS18	34

Orona 3G Plus	38
---------------------	----

Orona 3G

Domo PACKS

Reference Packs



DR10



DR11



DR12



DR13



DR14



DR15



DR16

Selection Packs



DS10



DS11



DS12



DS13



DS14



DR11





DR13





DR15





DS10





DS12

5
10
15
20
25
30
35
40
45
50
55
60
65
70
75
80
85
90
95
100



The control panel is located on the left wall of the elevator. It features a vertical column of buttons, each with a small circular indicator. At the top, there is a small digital display showing the number '5'. Below the buttons, there is a green emergency stop button and a small 'EXIT' button. The panel is mounted on a wood-grain wall.





DS14



Orona 3G Domo Packs

CAR OPERATING PANEL



LANDING INDICATOR



7 segment



Dot-matrix



TFT

LANDING PUSH BUTTONS



Push buttons to suit the lifts control type (1 or 2 push buttons)



Key switch push button (standard or eurocylinder)



Surface mounted push button



REFERENCE PACKS

SELECTION PACKS

DR10 DR11 DR12 DR13 DR14 DR15 DR16 DS10 DS11 DS12 DS13 DS14

CEILING AND LIGHTING

MODEL	LED	UP19	●	●	○	●	●	○	○	○	○	○	○	
	LED Spotlights	UP37	○	●	○	●	●	○	○	○	○	○	●	
	LED panel (200 x 200 mm)	UP41								●		●		
	LED panel (600x600 mm)	UP67		○			○					●	○	○
		UP73								●				
CEILING MATERIAL	ST01 St St Base	●	●	●	●	●	●	●	●	●	●	●	●	
	ST02 St St Plus	○	○	○	○	○	○	○	○	○	○	○	○	
OTHERS	Automatic lighting switch-off	●	●	●	●	●	●	●	●	●	●	●	●	
	Emergency hatch	○	○	○	○	○	○	○	○	○	○	○	○	
	Fan	○	○	○	○	○	○	○	○	○	○	○	○	

CAR WALLS

PANELS	Neocompact Colour	NC02 Red Autumn		●P						●F				
		NC03 White Snow	●	●F/L	●F/L	●F/L	●P	●L/P					●L/P	
		NC25 Warm Green			●P									
	Neocompact Wood	NC15 Oak Tree					●F/L							
		NC21 Oak White										●		
		NC22 Oak Grey				●P								
	Neocompact Texture	NC16 Linen Pure									●			
		NC17 Grey Storm												
		NC18 Night Garden							●F				●F	
		NC24 Tissue									●L/P			
	Panel Stainless	ST01 St St Base												●
		ST02 St St Plus												○
	Others	Without cladding (for local fit out)	○	○	○	○	○	○	○	○	○	○	○	○
		Tip-up seat	○	○	○	○	○	○	○	○	○	○	○	○
		2 Entrances or 'Through car' for 180, 'Front/Adjacent' for 90&270	○	○	○	○	○	○	○	○	○	○	○	○

CAR OPERATING PANELS AND INDICATORS

CAR INDICATOR	7 Segment	●	●	●	●	●	●	●	●	●	●	●	●
	Dot-matrix									●	●	●	●
	Car direction arrows	●	●	●	●	●	●	●	●	●	●	●	●
	Overload indicator (buzzer & light)	●	●	●	●	●	●	●	●	●	●	●	●
	Direction arrows on entrance return	○	○	○	○	○	○	○	○	○	○	○	○
	Car gong	○	○	○	○	○	○	○	○	○	○	○	○
	Voice synthesizer	○	○	○	○	○	○	○	○	○	○	○	○
Inductive acoustic coupler	○	○	○	○	○	○	○	○	○	○	○	○	
CAR OPERATING PANEL MATERIAL	ST01 St St Base	●	●	●	●	●	●	●	●	●	●	●	●
	ST02 St St Plus	○	○	○	○	○	○	○	○	○	○	○	○
CAR PUSH BUTTONS	Door close push button	○	○	○	○	○	○	○	○	○	○	○	○
	Braille push button	●	●	●	●	●	●	●	●	●	●	●	●
	Key switch push button (Standard or eurocylinder)	○	○	○	○	○	○	○	○	○	○	○	○
	External call cancelling	○	○	○	○	○	○	○	○	○	○	○	○
	Coded call	○	○	○	○	○	○	○	○	○	○	○	○
LANDING INDICATOR	7 Segment	●	●	●	●	●	●	●	○	○	○	○	○
	Dot-matrix								●	●	●	●	●
	Next departure indicator	○	○	○	○	○	○	○	○	○	○	○	○
	Landing gong	○	○	○	○	○	○	○	○	○	○	○	○
LANDING PUSH BUTTONS	Key switch push button (Standard or eurocylinder)	○	○	○	○	○	○	○	○	○	○	○	○
	Surface mounted push button	○	○	○	○	○	○	○	○	○	○	○	○
CAR OPERATING PANEL	Horizontal car operating panel	○	○	○	○	○	○	○	○	○	○	○	○

MIRRORS

MIRRORS	MH (Mirror 1/2)	●F	●F	●F	●F	●F	●F	●F	●F	●F	●F	●F	●F
	MT (Mirror 3/4 narrow)									●F	●F	●F	●F
	Rear-view mirror (EN 81-70)	○	○	○	○	○	○	○	○	○	○	○	○
FINISH	O1 Clear	●	●	●	●	●	●	●	●	●	●	●	●

HANDRAILS

HANDRAILS	HR01 (Aluminium tube)	●L	●L	●L	●L	●L	●L	●L					
	HR02 (Aluminium tube)									●F/L		●F/L	●F/L
	HR04 (Stainless steel tube)									●F/L		●F/L	

FINISHES

SKIRTINGS	SK01 Anodized Aluminium (St St finish)	●	●	●	●	●	●	●	●	●	●	●	●
DOOR MATERIALS (car and landing)	ST01 St St Base	●	●	●	●	●	●	●	●	●	●	●	●
	ST02 St St Plus	○	○	○	○	○	○	○	○	○	○	○	○
	Primed sheet (landing door)	○	○	○	○	○	○	○	○	○	○	○	○
DOOR PANEL TYPE	Standard panel (not big vision)	●	●	●	●	●	●	●	●	●	●	●	●

FLOORS

SC-PVC HIGH	SC04 Grey Storm			●	●	●	●	●	●	●	●	●	●
	SC05 Grey Silver	●	●										●
OTHERS	Prepared for granite	○	○	○	○	○	○	○	○	○	○	○	○
	Prepared for PVC	○	○	○	○	○	○	○	○	○	○	○	○

Orona 3G

Public PACKS

Reference Packs



PR10



PR11



PR12



PR13



PR14

Selection Packs



PS10



PS11



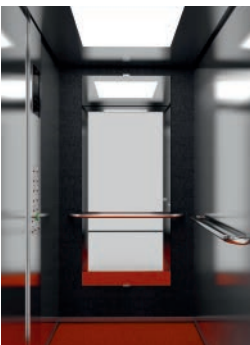
PS12



PS13



PS14



PS15



PS16



PS17



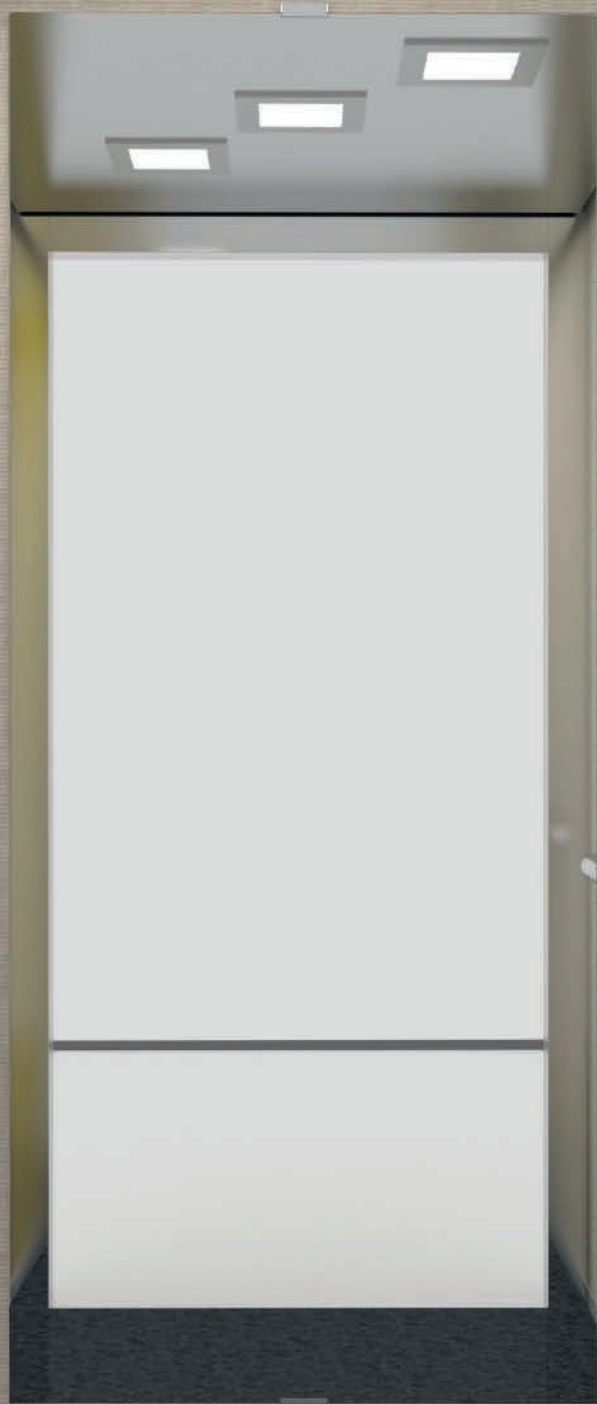
PS18



PR11



























Orona 3G Public Packs

CAR OPERATING PANEL



LANDING INDICATOR



7 segment



Dot-matrix



TFT

LANDING PUSH BUTTONS



Push buttons to suit the lifts control type (1 or 2 push buttons)



Key switch push button (standard or eurocylinder)



Surface mounted push button

REFERENCE
PACKS

SELECTION
PACKS

PR10 PR11 PR12 PR13 PR14 PS10 PS11 PS12 PS13 PS14 PS15 PS16 PS17 PS18

CEILING AND LIGHTING

MODEL	LED Spotlights	UP37	○	○	●	○	●	○	○	○	○	○	○	○	○	○
	LED panel (200x200 mm)	UP41		●		●				●						
		UP43									●					
	LED panel (600x600 mm)	UP47											●			
		UP53													●	
UP67		●		○		○						●		●		
LED panel (complete, consult availability of dimensions)	UP73								●							
	UP71						●		●							
CEILING MATERIAL	ST01 St St Base		●	●	●	●	●	○	○	○	○	○	○	○	○	○
	ST02 St St Plus		○	○	○	○	○	●	●	●	●	●	●	●	●	●
OTHERS	Automatic lighting switch-off		●	●	●	●	●	●	●	●	●	●	●	●	●	●
	Emergency hatch		○	○	○	○	○	○	○	○	○	○	○	○	○	○
	Fan		○	○	○	○	○	○	○	○	○	○	○	○	○	○

CAR WALLS

PANELS	Neocompact Colour	NC02 Red Autumn								●P							
		NC03 White Snow							●P			●P					
		NC05 Blue Berry												●P			
		NC25 Warm Green				●P											
		NC12 Wood Sinatra							●F/L								
	Neocompact Wood	NC15 Oak Tree			●												
		NC21 Oak White								●							
		NC22 Oak Grey	●									●F/L					
	Neocompact Texture	NC16 Linen Pure							●								
		NC18 Night Garden												●F			
		NC23 Light Linen				●F/L											
		NC24 Tissue		●													
	Panel Stainless	ST01 St St Base					●				●F/L		●P/L	●F/L	●	●	
		ST02 St St Plus					○				○F/L		○P/L	○F/L	○	○	
	Others	Without cladding (for local fit out)	○	○	○	○	○	○	○	○	○	○	○	○	○	○	○
Tip-up seat		○	○	○	○	○	○	○	○	○	○	○	○	○	○	○	
2 Entrances or 'Through car' for 180, 'Front/Adjacent' for 90&270		○	○	○	○	○	○	○	○	○	○	○	○	○	○	○	

CAR OPERATING PANEL AND INDICATORS

CAR INDICATOR	Dot-matrix		●	●	●	●	●									
	TFT							●	●	●	●	●	●	●	●	●
	Car direction arrows		●	●	●	●	●	●	●	●	●	●	●	●	●	●
	Overload indicator (buzzer & light)		●	●	●	●	●	●	●	●	●	●	●	●	●	●
	Direction arrows on entrance return	○	○	○	○	○	○	○	○	○	○	○	○	○	○	○
	Car gong	○	○	○	○	○	○	○	○	○	○	○	○	○	○	○
	Voice synthesizer	○	○	○	○	○	○	○	○	○	○	○	○	○	○	○
CAR OPERATING PANEL MATERIAL	Inductive acoustic coupler	○	○	○	○	○	○	○	○	○	○	○	○	○	○	○
	ST01 St St Base		●	●	●	●	●	○	○	○	○	○	○	○	○	○
CAR PUSH BUTTONS	ST02 St St Plus		○	○	○	○	○	●	●	●	●	●	●	●	●	●
	Door close push button	○	○	○	○	○	○	○	○	○	○	○	○	○	○	○
	Braille push button	●	●	●	●	●	●	●	●	●	●	●	●	●	●	●
	Key switch push button (Standard or eurocylinder)	○	○	○	○	○	○	○	○	○	○	○	○	○	○	○
	External call cancelling	○	○	○	○	○	○	○	○	○	○	○	○	○	○	○
LANDING INDICATOR	Coded call	○	○	○	○	○	○	○	○	○	○	○	○	○	○	○
	7 Segment	○	○	○	○	○	○	○	○	○	○	○	○	○	○	○
	Dot-matrix	●	●	●	●	●	●	●	●	●	●	●	●	●	●	●
	Next departure indicator	○	○	○	○	○	○	○	○	○	○	○	○	○	○	○
LANDING PUSH BUTTONS	Landing gong	○	○	○	○	○	○	○	○	○	○	○	○	○	○	○
	Key switch push button (Standard or eurocylinder)	○	○	○	○	○	○	○	○	○	○	○	○	○	○	○
CAR OPERATING PANEL	Surface mounted push button	○	○	○	○	○	○	○	○	○	○	○	○	○	○	○
	Horizontal car operating panel	○	○	○	○	○	○	○	○	○	○	○	○	○	○	○

MIRRORS

MIRRORS	MT (Mirror 3/4 narrow)	●F	●F	●F	●F	●F	●F	●F	●F	●F	●F	●F	●F	●F	●F	●F
	Rear-view mirror (EN 81-70)	○	○	○	○	○	○	○	○	○	○	○	○	○	○	○
FINISH	01 Clear	●	●	●	●	●	●	●	●	●	●	●	●	●	●	●

HANDRAILS

	HR04 (Stainless steel tube)	●L	●L	●L	●L	●L	●L	●F/L	●L	●F/L	●F/L	●F/L	●L	●F/L	●L
--	-----------------------------	----	----	----	----	----	----	------	----	------	------	------	----	------	----

FINISHES

SKIRTINGS	SK01 Anodized Aluminium (St St finish)	●	●	●	●	●	●	●	●	●	●	●	●	●	●	●
DOOR MATERIALS (car and landing)	ST01 St St Base	●	●	●	●	●	○	○	○	○	○	○	○	○	○	○
	ST02 St St Plus	○	○	○	○	○	●	●	●	●	●	●	●	●	●	●
	Primed sheet (landing door)	○	○	○	○	○	○	○	○	○	○	○	○	○	○	○
DOOR PANEL TYPE	Standard panel (not big vision)	●	●	●	●	●	●	●	●	●	●	●	●	●	●	●

FLOORS

SC-PVC HIGH	SC01 Red Cherry													●		
	SC03 Grey Ice						●	●								
	SC04 Grey Storm		●	●	●	●			●	●	●					●
	SC05 Grey Silver	●												●		
	SC06 Beige Sand														●	
OTHERS	Prepared for granite	○	○	○	○	○	○	○	○	○	○	○	○	○	○	○
	Prepared for PVC	○	○	○	○	○	○	○	○	○	○	○	○	○	○	○

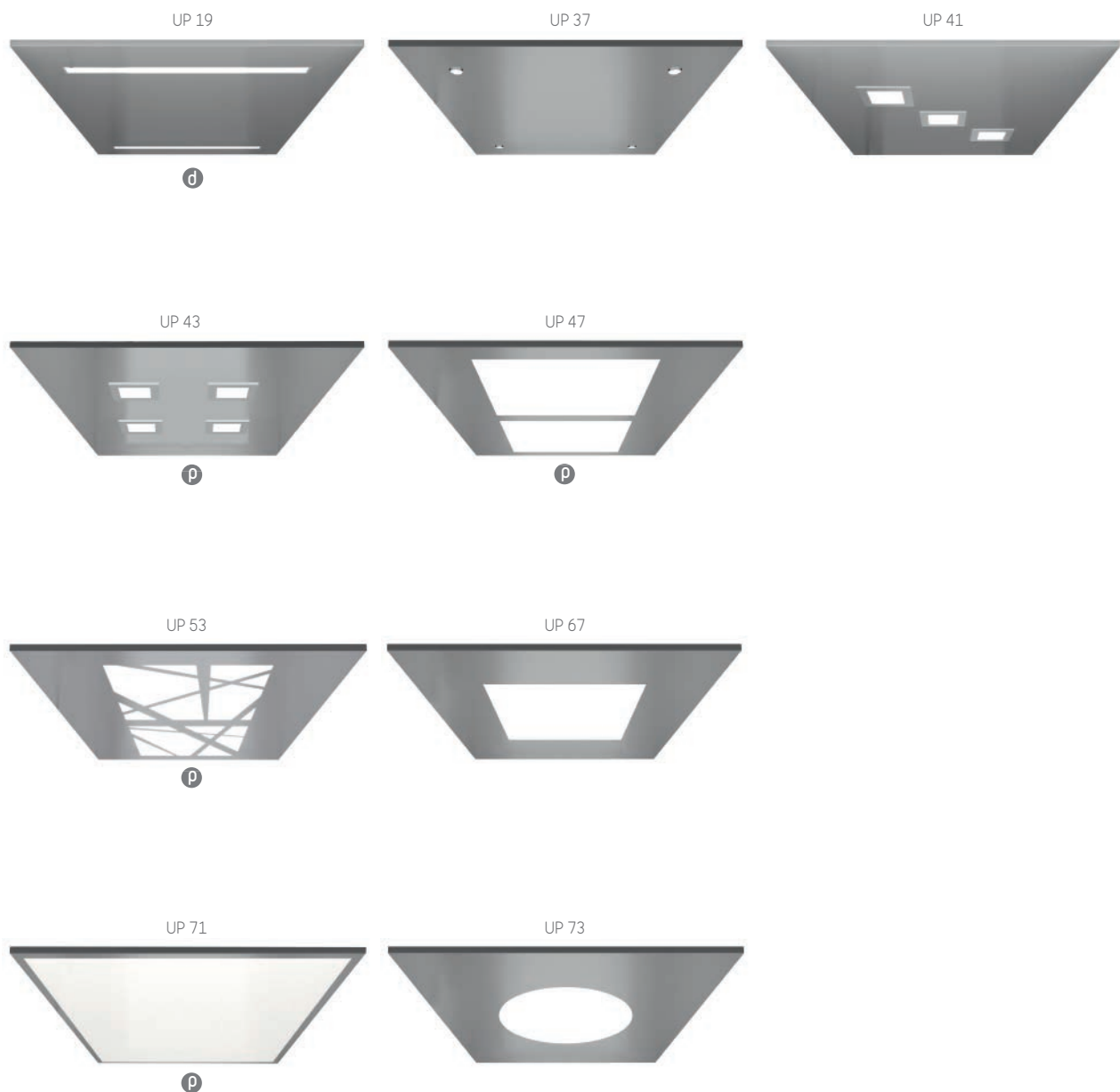


Orona 3G
Plus

Orona 3G Plus

Ceilings and LED lighting - Automatic lighting switch-off included

MODEL



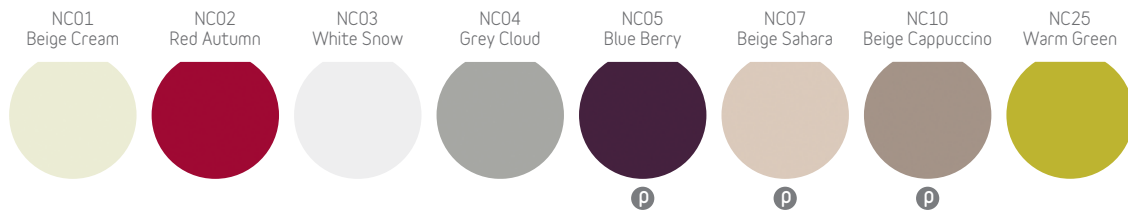
OTHERS

- Emergency hatch
(UP37- UP41)

- Fan

Car walls

NEOCOMPACT COLOUR



NEOCOMPACT WOOD



NEOCOMPACT TEXTURE



PANEL STAINLESS



OTHERS

- Without cladding (for local fit out)
- Tip-up seat
- 2 Entrances or 'Through car' for 180, 'Front/Adjacent' for 90&270

Car operating panel

Car indicator



7 segment



d



p

Dot-matrix



d



p

TFT



d



p

Direction arrows on entrance return



OTHERS

- Car direction arrows
- Overload indicator (buzzer & light)
- Car gong
- Voice synthesizer
- Inductive acoustic coupler

OTHERS

- Double car operating panel
- Horizontal car operating panel

Landing indicator

7 segment



d



p

Dot-matrix



d



p

TFT



d



p

Wall landing indicator



d



p

OTHERS

- Next departure indicator
- Landing gong

Car push buttons

Orona Braille circular model



Model with additional contrast



OTHERS

- Door close push button
- Key switch push button (Standard or eurocylinder)
- External call cancelling
- Coded call

Orona 3G Series push buttons are water-resistant (IPX3 under EN 60529) and have fully passed the impact and fire tests defined in the EN 81-71 standard.

For enhanced anti-vandalism resistance needs (Category 1), Orona offers its comprehensive PPSS O3G anti-vandalism solutions, which fully complies with the EN 81-71 standard (push buttons, displays, doors, lighting, ceilings, walls, floors, mirrors, enclosures, etc.).

Landing push buttons

Push buttons to suit the lifts control type (1 or 2 push buttons)



d



p

Key switch push button (standard or eurocylinder)



d

p

Surface mounted push button



d

p

Mirrors

MH (Mirror 1/2)

MT (Mirror 3/4 narrow)

MW (Mirror 3/4 wide) **p**

Rear-view mirror (EN 81-70)

FINISH

01 Clear

02 Smoked

Bumrails

Wood

Stainless steel

PVC

Double bumprail

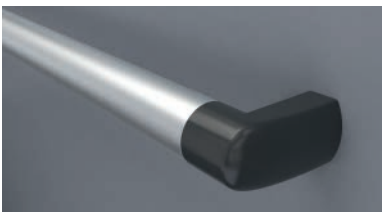
Skirtings

SK01 Anodized Aluminium (St St finish)

SK02 Lacquered Aluminium

Handrails

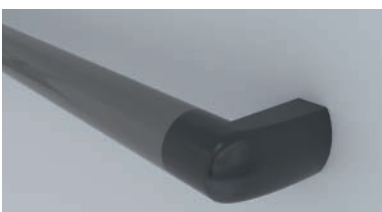
HR01 (Aluminium tube)



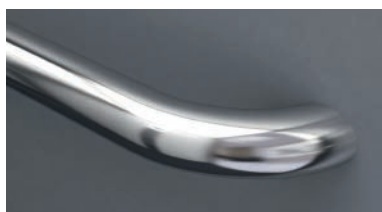
HR02 (Aluminium tube)



HR03 (Aluminium tube)

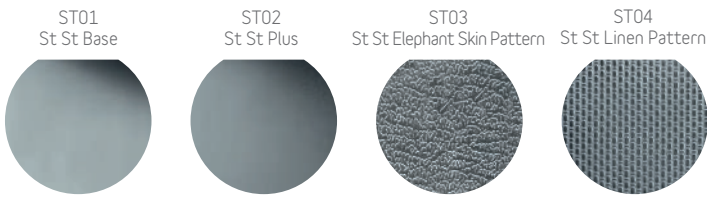


HR04 (Stainless steel tube)



p Only available in Public range **d** Only available in Domo range

Car operating panel material and/or ceiling and/or doors (car and landing)



Floors

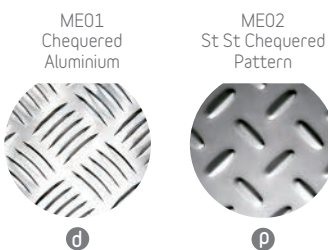
SC-PVC HIGH



SW CERAMICS · Available subject to dimensions



ME-OTHER



OTHERS

- Prepared for granite (23 mm)
- Prepared for PVC (23 mm or 3 mm in restricted pits)



- ✦ 1 out of every 10 new lifts in Europe is Orona
- ✦ More than 100 countries have Orona products installed
- ✦ 250,000 lifts worldwide with Orona technology
- ✦ First company in the sector worldwide certified in Eco-design (ISO 14006)

Orona 3G

- ✦ Aesthetic solutions
- ✦ Technical solutions





SJEC-0-ESCP-20160110

We reserve the right to alter some of specifications and descriptions given here in without prior notices

ESCALATOR & PASSENGER CONVEYOR

SJEC

Elevators & Escalators
since 1992

**A Committed,
Reliable & Responsible
Elevator & Escalator
Manufacturer since 1992**

Briefs

SJEC

Elevators & Escalators
since 1992



Pavilion of corporation



Corridor of corporation



Office area of corporation



Workshop of corporation

CORPORATION DATA:

- Land area: 138000m²,
- Manufacturing area: 76000m²,
- Test tower height: 140m,
- Manpower: 2000

ANNUAL MANUFACTURING CAPACITY:

- 15000 units elevators,
- 5000 units escalators and passenger conveyors

INTERNATIONAL CERTIFICATION:

- ISO9001, ISO14001, OHSAS18001 and SA8000 by DNV,
- DIN18000-7 by SLV Duisburg Germany,
- Product Certificate by TÜV Germany,

MARKETING:

- Products sold over 80 countries around the world. Such as Asia, Europe, Oceania, Africa, America and etc.

Manufacturing Facilities

Believed that best quality comes from the best equipment. SJEC has imported the world's first classic NC facilities, At present, SJEC has been updated its 6 sheet metal lines . there are 4KW laser cutting machine from MITSUBISHI, Turret punching machine from WIEDMANN, CNC Bending and shearing machine from KOMATSU, Processing lines from AMADA, Processing Center from CINCINNATI, Welding robot from YASKAWA and etc.
All these can well guarantee our manufacturing quality.



Workshop



Turret punching and shearing machine



Robot station



SALVAGNINI flexible product line



Welding robot



Laser cutting machine

FES Escalator

Silence and comfort. The new generation has inherited the traditional safety, reliability, high efficiency style and combined with updated market trends as well as tailored solutions. It is widely used for shopping malls, Hotels, office blocks and etc.



Avnat mall, Israel

Type	FES
Inclination	30° /35°
Step width(mm)	600/800/1000
Horizontal step run (mm)	800/1200
Speed (m/s)	0.5
Power supply	AC 3 phase.5 wire50Hz/60Hz
Installation position	Indoor/Outdoor
Rise(m)	2~6/7.5 (Details as following)

Rise (m)	Inclination	Horizontal step Qty
2~6	30°/35°	2
2~7.5	30°	3

Type	Standard	Optional
Balustrade design	Vertical safety glass (10mm safety tempered glass)	
Balustrade profile	Q235/SS	
Handrail	Black	Other colors
Deckings	Hairline SS	
Skirting panel	Hairline SS	
Step	Aluminum alloy Die-cast, gray color	
Landing plate	Punched SS	Etched SS/Extrude aluminum
Operation panel	Red emergency stop button and up/down key switch	



Brisbane Royal Hospital, Australia



Science & Technology Hall, Beijing China

FEH Escalator

Weatherproof and unique balustrade design, conform to special customer specifications. It is suit for airport, subway and overpass etc.



Type	FEH
Inclination	30° / 35° / 23.2° / 27.3°
Step width(mm)	600/800/1000
Horizontal step run (mm)	800/1200/1600
Speed (m/s)	0.5/0.65
Power supply	AC 3 phase.5 wire50Hz/60Hz
Installation position	Indoor/Outdoor
Rise(m)	2~6/8/12/15(Details as following)

Rise (m)	Inclination	Horizontal step Qty	Upper radius(mm)
2~6	30°/35°	2	1500
2~8	30°	3	1500
2~12 (max. speed 0.65m/s)	23.2°/27.3°/ 30°	3/4	2700
2~15(max. speed 0.5m/s)	23.2°/27.3°/ 30°	3/4	2700

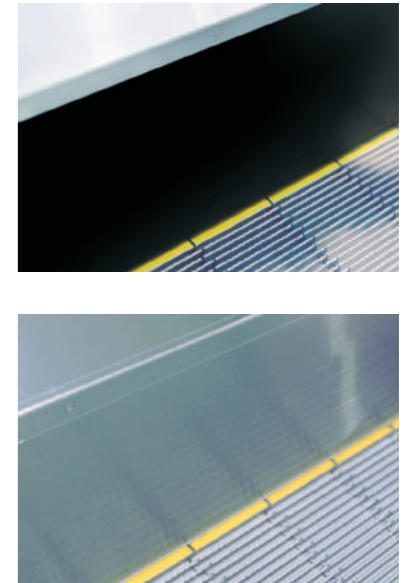
Type	Standard	Optional
Balustrade design	Vertical safety glass(10mm safety tempered glass)	Inclined SS
Balustrade profile	Hairline SS	
Handrail	Black	Other colors
Deckings	Hairline SS	
Skirting panel	Hairline SS	
Step	Aluminum alloy Die-cast, gray color	
Landing plate	Etched Stainless steel	Extrude aluminum with surface of stainless steel/Extrude aluminum
Operation panel	Red emergency stop button and up-down key switch	



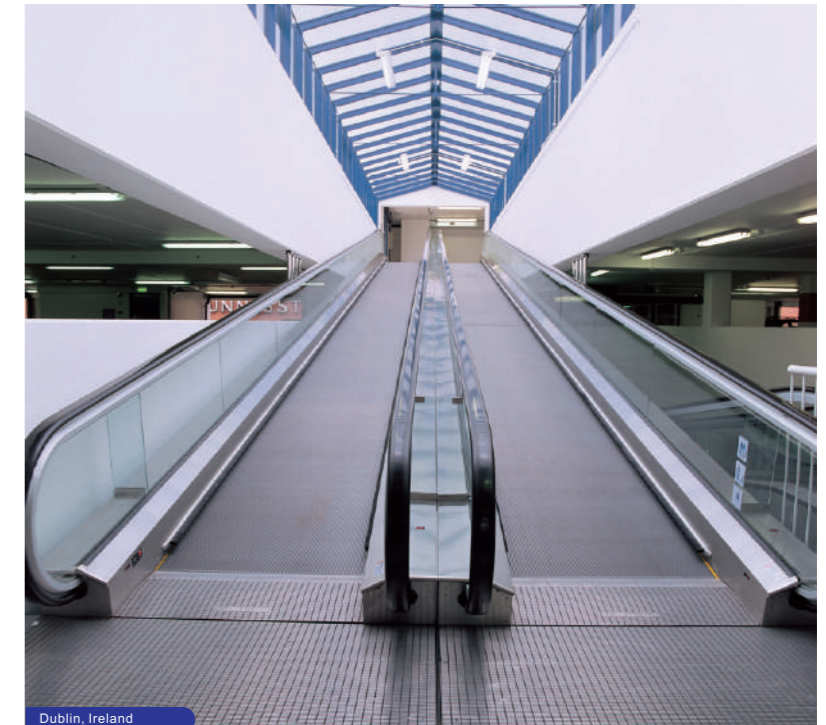
Passenger Conveyor

Is reliable, high efficiency, easy for maintenance, which is suit for hypermarket and airport.

Specs	Passenger conveyor		
Type	FET	FEF	FEW
Inclination	10° 11° 12°	10° 11° 12°	0° – 6°
Pallet width (mm)	800/1000	800/1000	1000/1200/1400
Horizontal pallet run (mm)	400(upper landing)	400/800	N/A
Speed (m/s)	0.5		
Power supply	AC 3 phase.5 wire50Hz/60Hz		
Installation position	Indoor/Outdoor		
Rise/Length(m)	H: 2~7.5	H: 2~7.5	L: 20~120



Type	Standard	Optional
Balustrade design	Vertical safety galss(10mm safety tempered glass)	Inclined SS for FEW
Balustrade profile	Hairline SS	
Handrail	Black	Other colors
Deckings	Hairline SS	
Skirting panel	Hairline SS	
Pallet	Die-cast aluminum	
Landing plate	Punched SS	Etched SS/Extrude aluminum
Operation panel	Red emergency stop button and up-down key switch	



Standard Features

Standard	FES	FEH	FET/FEF/FEW
Automatic Lubrication System	●	●	●
Alarm buzzer	●	●	●
Brake Distance Monitor	●	●	●
Comb Contacts	●	●	●
Emergency stop buttons	●	●	●
Fire Interface	●	●	●
Fault & Status Display	●	●	●
Handrail anti-static roller	●	●	●
Handrail Entry Contacts	●	●	●
Handrail Speed Monitor	●	●	●
Landing Plate Contact	●	●	●
Motor Overheat	●	●	●
Maintenance Interlock Protection	●	●	●
Phase Monitor	●	●	●
Safety Brake on Main shaft		●	
Speed Monitor with Electrical Reverse Detection	●	●	●
Step/Pallet anti-static brush	●	●	●
Step/Pallet chains contacts	●	●	●
Step/Pallet Missing Monitor	●	●	●
Step/Pallet reversing fences	●	●	●
Step/Pallet sag contacts	●	●	●
Soft Stop	●	●	●
Service brake release contact	●	●	●

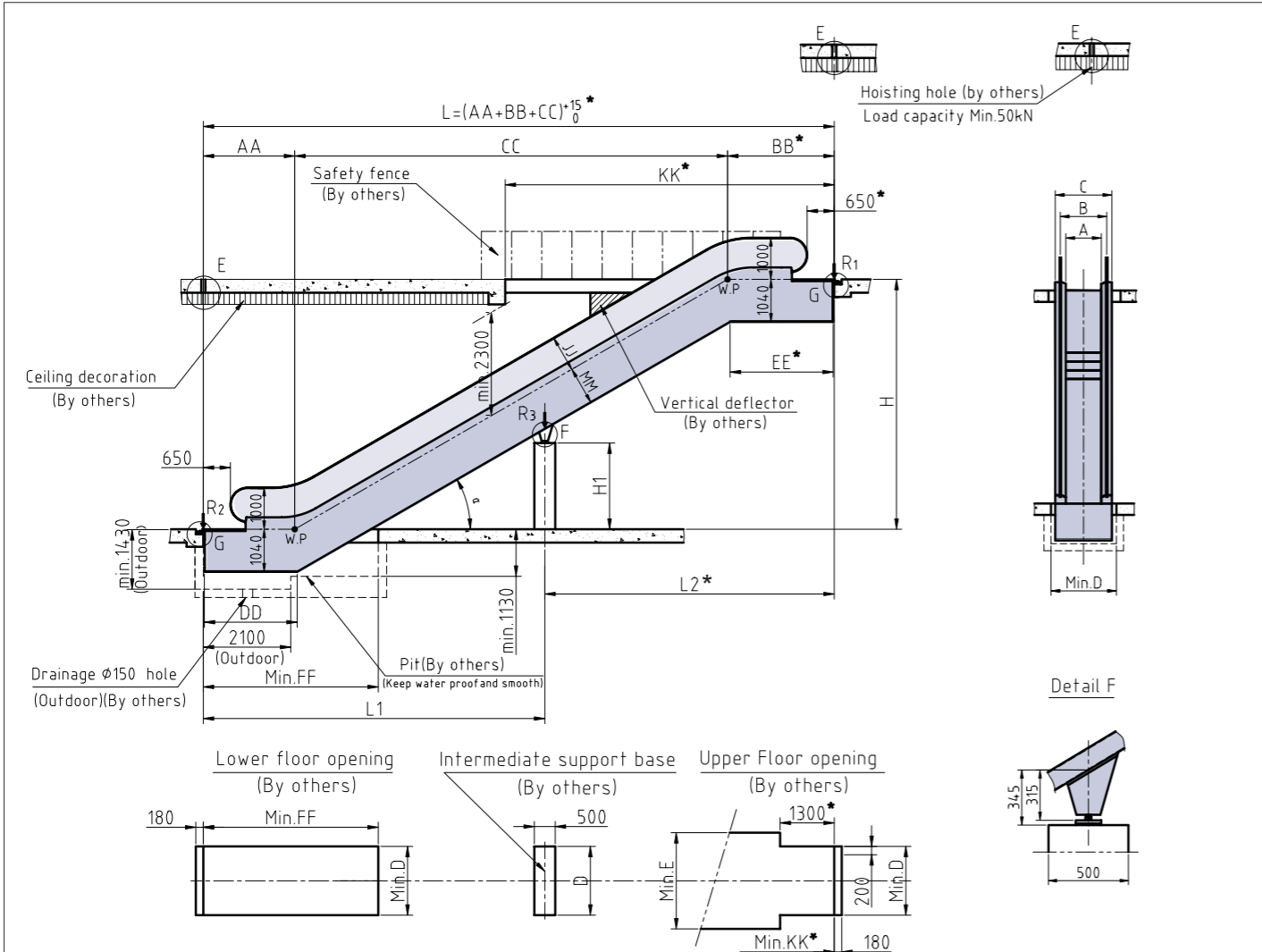


Optional Features

Optional	FES	FEH	FET/FEF/FEW
Auto-Start	●	●	●
Cable Connector for intersection	●	●	●
Comb Heating System	●	●	●
Comb Light	●	●	●
Drive-chain Contact	●	●	●
Dry Contact for Remote Monitoring System	●	●	●
Float Contact	●	●	●
Handrail Broken Contact	●	●	●
Handrail Colour	●	●	●
Outside Cladding	●	●	●
Skirting Brush	●	●	●
Safety Brake on Main Shaft	●		●
Skirting Contacts	●	●	●
Step Gap Illumination	●		
Skirting Lighting (LED Dot Light)	●	●	●
Step/Pallet Colour	●	●	
Step Safety Demarcation	●	●	
Step Upthrust Contact	●		
Truss Heating System	●	●	●
Traffic Light	●	●	●
VVVF Control	●	●	●



FES Layout for Commercial Escalator



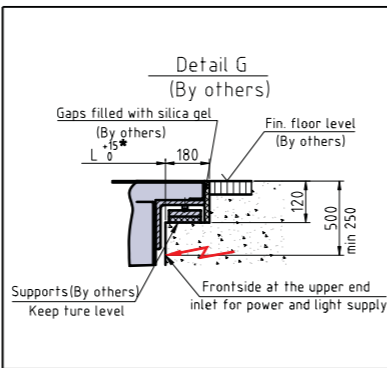
For slim-vertical balustrade

A	600	800	1000
B	837	1037	1237
C	1145	1345	1545
D	1200	1400	1600
E	1720	1920	2120

Type	a	AA	BB	CC	DD	EE	FF	JJ	KK	MM
FES-302	30°	2195	2449	H X 1.732	2230	2355	4200	870	7800	960
FES-352	35°	2229	2510	H X 1.428	2385	2312	4000	850	7000	980
FES-303	30°	2595	2964	H X 1.732	2630	2870	4600	870	8300	960

A	Reaction Force (KN)	
	W/o intermediate support	With one intermediate support
600	R1=3.35×L+15.5	R1=3.35×L2+11.5
	R2=3.35×L+10	R2=3.35×L1+4.5
800	R1=3.7×L+17	R1=3.7×L2+12
	R2=3.7×L+11	R2=3.7×L1+4.7
1000	R1=4.15×L+18.5	R1=4.15×L2+12.5
	R2=4.15×L+11.5	R2=4.15×L1+4.9

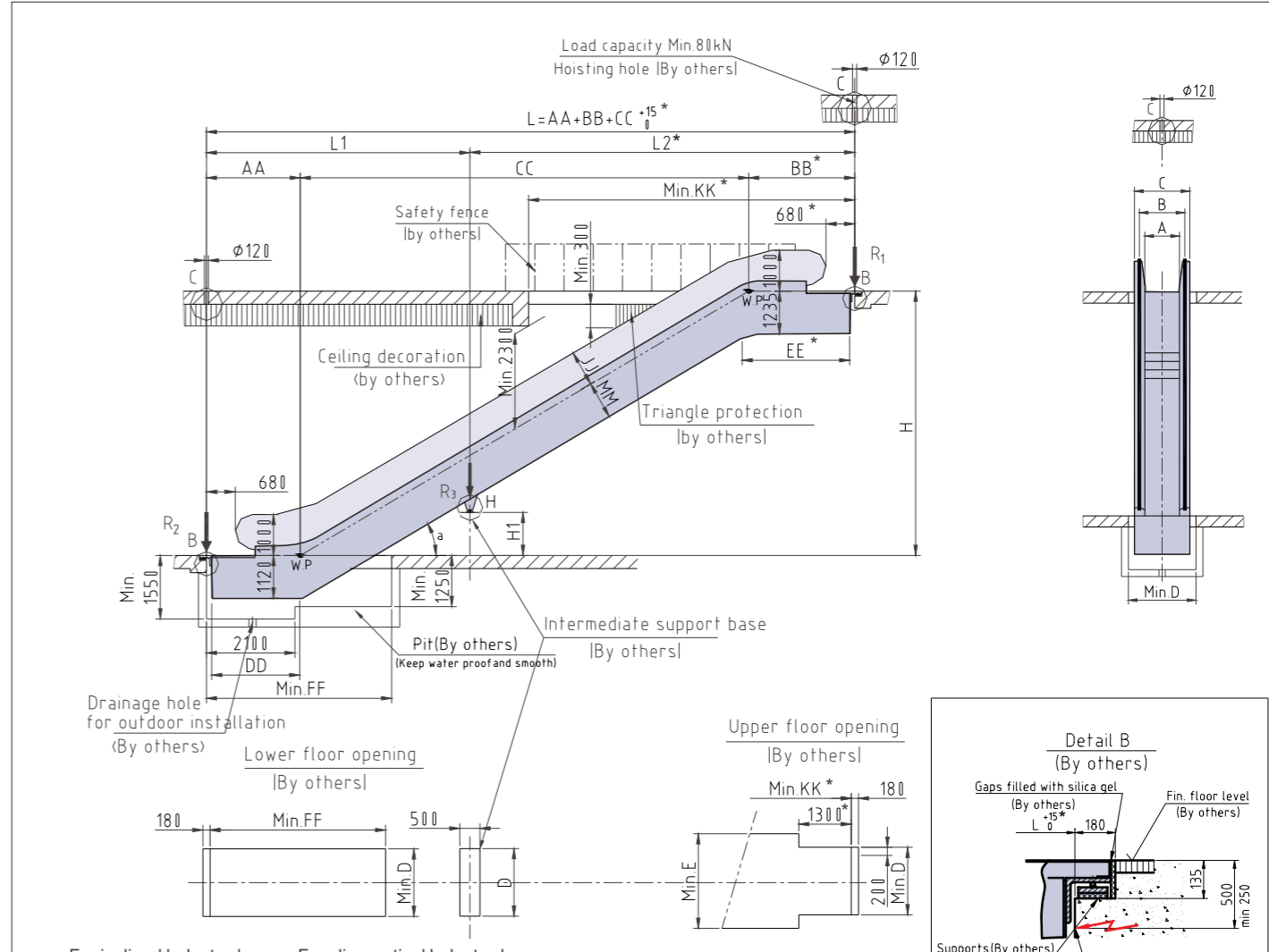
Note: 1.L, L1, L2 is in meter



- NOTE:
- Height above sea level
Height above sea level of the placed escalators shall be no greater than 1000m.in case of particular,please contact SJEC.
 - If one of the following situations is met, the dimensions with mark * shall be extended 500mm
(1) 600 mm step.
(2)double drive .
(3)VVVF and power exceeds 11KW.
(4)Main power 200Vgrade and motor power more than 7.5KW.
 - Client shall provide the intermediate support base which can be made by the reinforced concrete or metallic structure in right position in case of horizontal distance L over 15 m.
 - The requirements of escalators and building interfaces in Figure1 ~Figure 5 accord with the national standards (EN115-1:2008+A1:2010) . If doubt, please contact SJEC.

We reserve the right to alter some of specifications and descriptions given here in without prior notices.

FEH Layout for Public Service Escalator



For inclined balustrade For slim-vertical balustrade

A	600	800	1000	A	600	800	1000
B	910	1110	1310	B	837	1037	1273
C	1195	1395	1595	C	1195	1395	1595
D	1270	1470	1670	D	1270	1470	1670
E	1790	1990	2190	E	1790	1990	2190

A	Reaction Force (KN)	
	W/o intermediate support	With one intermediate support
600	R1=4.05×L+16.3	R1=4.05×L2+14
	R2=4.05×L+8.5	R2=4.05×L1+7
800	R1=4.45×L+17	R1=4.45×L2+16
	R2=4.45×L+9.5	R2=4.45×L1+7.5
1000	R1=4.95×L+19.5	R1=4.95×L2+17.2
	R2=4.95×L+10.5	R2=4.95×L1+8.3

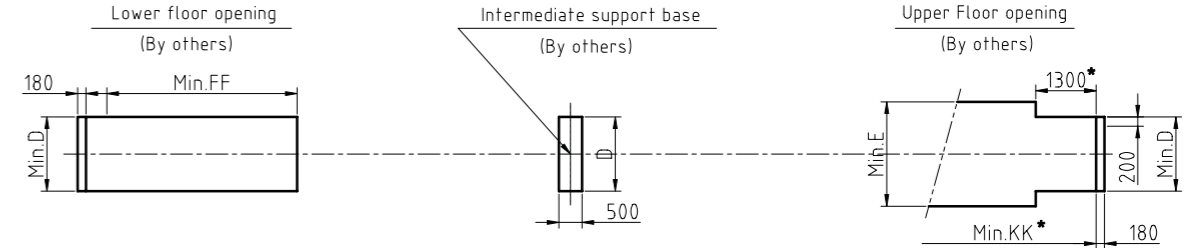
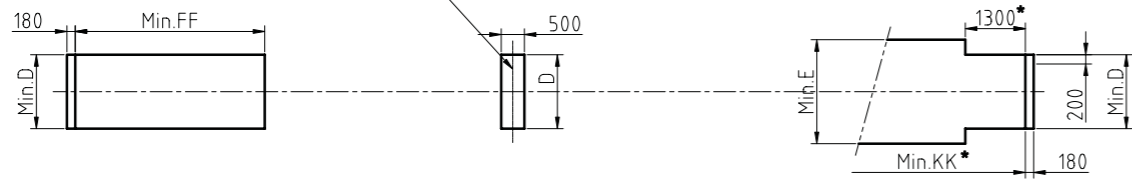
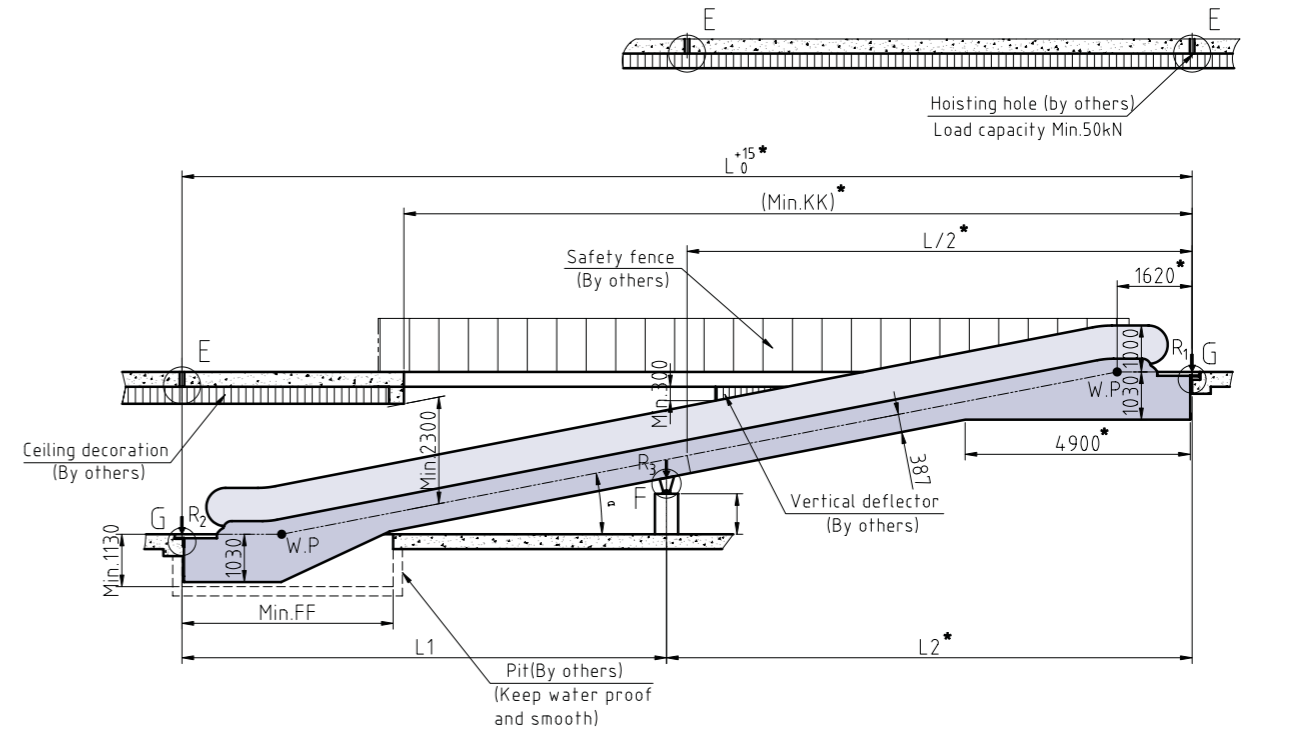
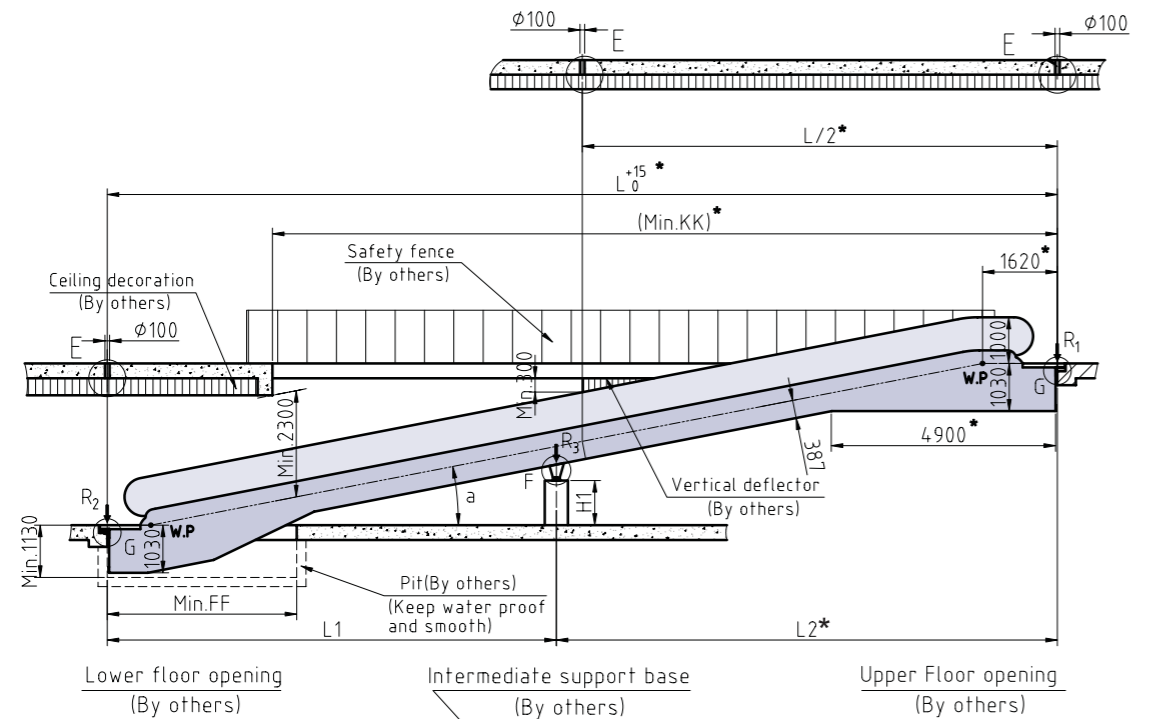
Note: 1.L, L1 and L2 is in meter
2.L1 and L2 do not exceed 15m.

Type	a	Upper radius	AA	BB	CC	DD	EE	FF	JJ		MM	KK
									(for inclined balustrade)	(for vertical balustrade)		
FEH302	30	1500	2231	2598	Hx1.732	2370	2815	4530	870	870	1060	8000
FEH303	30	1500	2631	2998	Hx1.732	2770	3215	4930	870	870	1060	8400
FEH352	35	1500	2266	2682	Hx1.428	2505	2780	4420	850	850	1080	7200
FEH233	23.2	2700	2898	3220	Hx2.333	2885	3730	5700	901	919	1040	10200
FEH234	23.2	2700	3298	3620	Hx2.333	3285	4130	6100	901	919	1040	10600
FEH273	27.3	2700	2945	3350	Hx1.938	3047	3613	5450	882	900	1060	9800
FEH274	27.3	2700	3345	3750	Hx1.938	3447	4013	5850	882	900	1060	10200
FEH303	30	2700	2863	3283	Hx1.732	3000	3500	5160	870	870	1060	8800
FEH304	30	2700	3263	3683	Hx1.732	3400	3900	5560	870	870	1060	9220

We reserve the right to alter some of specifications and descriptions given here in without prior notices.

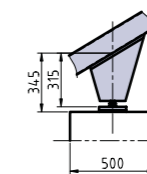
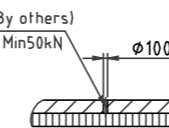
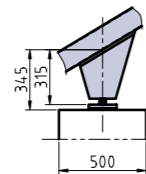
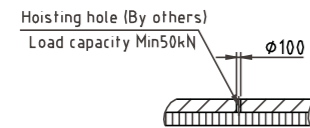
FET Layout for Passenger Conveyor

FEF Layout for Passenger Conveyor



Detail F

Detail F



A	800	1000
B	1037	1237
C	1345	1545
D	1400	1600
E	1920	2120

Type	A	L	KK	FF
FET10	10°	H×5.671+2650	17700	4250
FET11	11°	H×5.145+2555	16700	4150
FET12	12°	H×4.705+2475	15800	4000

A	800	1000
B	1037	1237
C	1345	1545
D	1400	1600
E	1920	2120

Type	A	L	KK	FF
FEF10	10°	H×5.671+3945	17700	4750
FEF11	11°	H×5.145+3755	16700	4550
FEF12	12°	H×4.705+3595	15800	4500

A	Reaction Force (KN)
800	R1=3.45×L2+12.5 R2=3.45×L1+4 R3=4×L+14.5
1000	R1=3.85×L2+14 R2=3.85×L1+4.5 R3=4.5×L+15.5

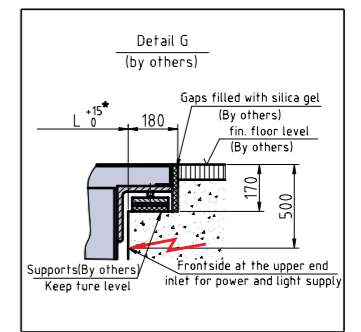
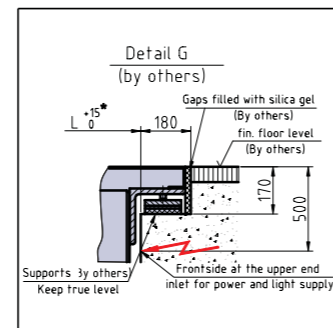
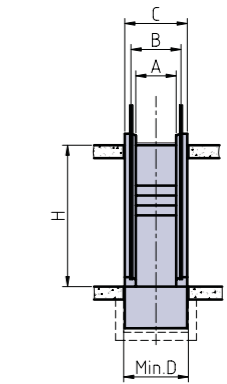
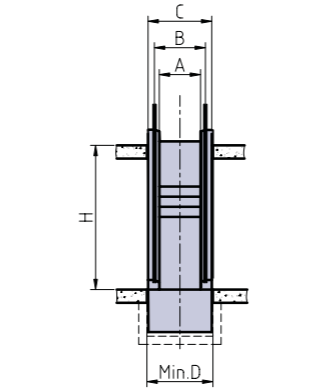
A	Reaction Force (KN)
800	R1=3.45×L2+12.5 R2=3.45×L1+4 R3=4×L+14.5
1000	R1=3.85×L2+14 R2=3.85×L1+4.5 R3=4.5×L+15.5

NOTE:

- Height above sea level
Height above sea level of the placed moving walks shall be no greater than 1000m.in case of particular, please contact SJEC.
- If one of the following situations is met, the dimensions with mark* shall be extended 500mm
(1) double drive.
(2) VVVF.
- Main power 200V grade and motor power more than 7.5KW.
- Client shall provide the intermediate support base which can be made by the reinforced concrete or metallic structure in right position in case of horizontal distance L over 10 m.
- The requirements of moving walks and building interfaces in Figure1 ~Figure 5 accord with the national standards (EN115-1:2008+A1:2010). If doubt, please contact SJEC.

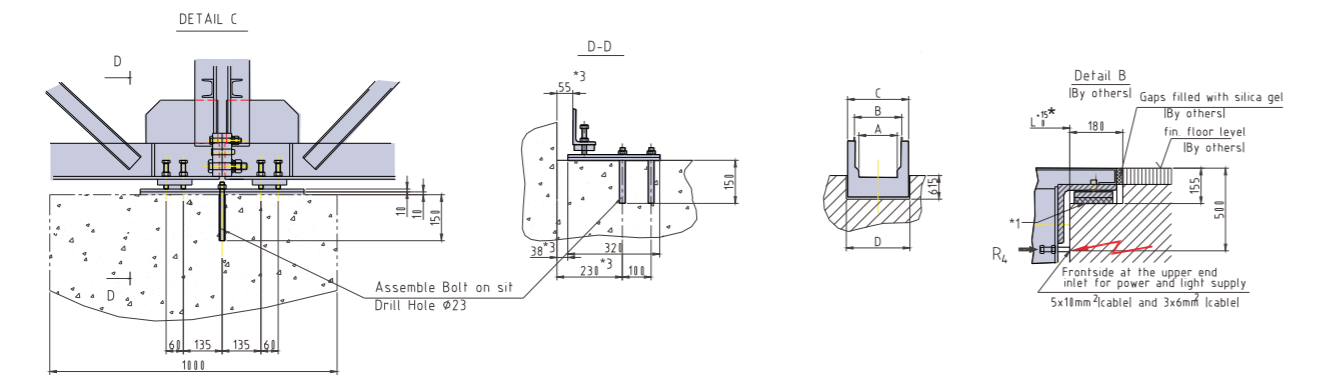
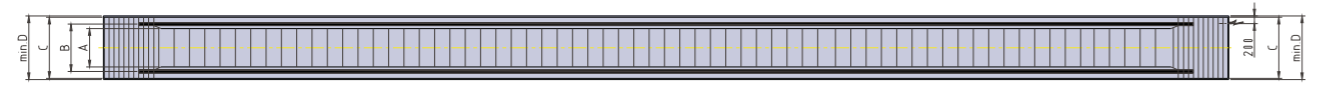
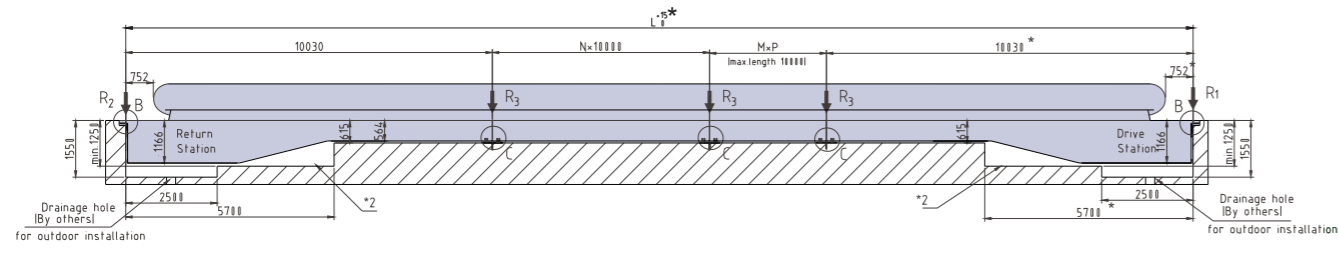
NOTE:

- Height above sea level
Height above sea level of the placed moving walks shall be no greater than 1000m.in case of particular, please contact SJEC.
- If one of the following situations is met, the dimensions with mark* shall be extended 500mm
(1) double drive.
(2) VVVF.
- Main power 200V grade and motor power more than 7.5KW.
- Client shall provide the intermediate support base which can be made by the reinforced concrete or metallic structure in right position in case of horizontal distance L over 10 m.
- The requirements of moving walks and building interfaces in Figure1 ~Figure 5 accord with the national standards (EN115-1:2008+A1:2010). If doubt, please contact SJEC.



FEW layout for Passenger Conveyor

Project Highlight



Inclined balustrade

A	1000	1200	1400
B	1310	1510	1710
C	1595	1795	1995
D	1670	1870	2070

Vertical balustrade

A	1000	1200	1400
B	1237	1437	1637
C	1595	1795	1995
D	1670	1870	2070

A	1000	1200	1400
Reaction Force (KN)			
R1	55	64	73
R2	53	61	69
R3	90	110	125
R4	5	5	5

- Note:
1. Mark:
 - ① Mark*1: Supports need to be in true level
 - ② Mark*2: If there is pit, pit need to be water proof and smooth
 - ③ Mark*3: If dimension D is changed, the dimension marked should be adjusted
 2. According to EN115, the entrance of both landing must have enough area to facilitate the traffic flow
 3. If one of the following situations is met, the dimensions with mark * shall be extended 500mm.
 - (1) double drive
 - (2) VVVVF
 - (3) Main power 200V grade and motor power more than 7.5KW.
 4. All dimensions refer to finished dimension are in mm.

We reserve the right to alter some of specifications and descriptions given here in without prior notices.

