



*Building History*

# PRE MIX PLASTER

## Just Add Water...

P R O D U C T   G U I D E



[www.conmix.com](http://www.conmix.com)

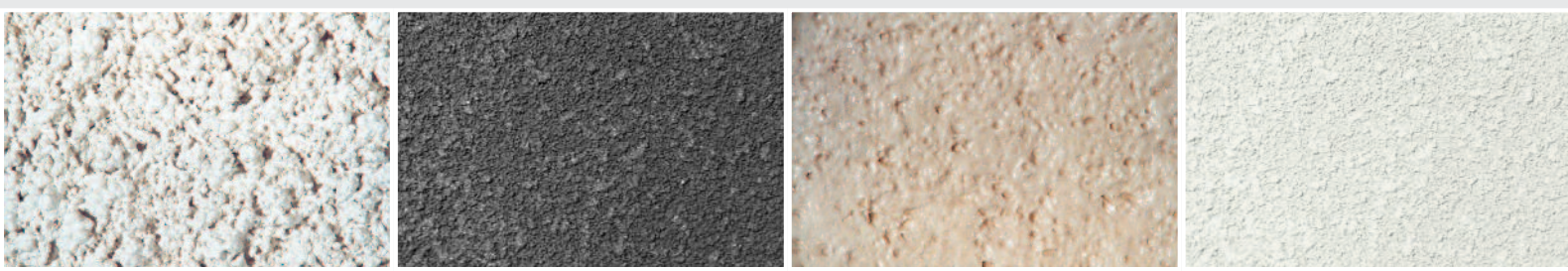
# company profile



*Building History*



**C**ONMIX LTD., Sharjah, United Arab Emirates, was established in the year 1975. It is a joint-venture between The Bukhatir Group and German-Gulf Enterprises Limited. The business portfolio of CONMIX includes Ready Mix Concrete, Pre Mix Plaster, Construction Chemicals, Piling, Water Treatment and Oilfield Additives.





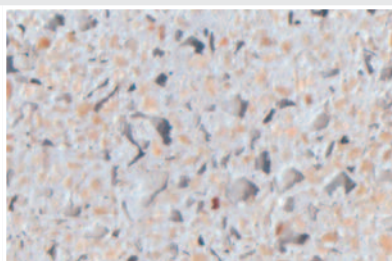
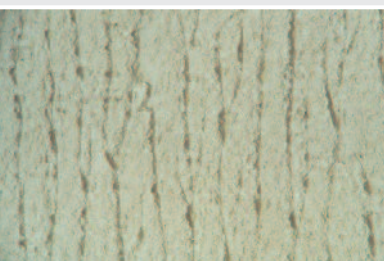
CONMIX LTD. is a pioneer in the field of Pre Mix Plaster in the U.A.E. With state-of-art dry mortar plants located at Dubai, Sharjah and Ras Al Khaimah, the company is one of the leading manufacturers in the Middle East. Product range includes, Cement Plasters / Renders, Gypsum Lime Plasters, Decorative Plasters, Acoustic & Insulation Plasters, Tile Adhesives & Grouts, Surface Treatment / Repair & Specialized Mortars and Acrylic Plasters / Coatings. CONMIX also offers tailor made special products to meet specific project requirements.

CONMIX provides onsite support to clients by installing samples, providing training on product applications, providing and maintenance of spray plaster machines, assisting in product selection and troubleshooting.

CONMIX products form an integral part of innumerable buildings and civil engineering works in the United Arab Emirates and elsewhere. Many of the company's products are currently being exported to 40 countries spread over Asia and Africa.

The company follows a quality management system certified to ISO 9001, maintaining quality assurance in design, development, production, installation and service. All products meet the relevant international standards.

Construction companies increasingly rely on CONMIX as a one-stop solution for their construction needs.



## LIST OF PRODUCTS

### CEMENT PLASTERS

#### BONDING RUSH COAT - BRC

##### *No more hacking . . .*

BRC is a dry pre mix, mineral based bonding coat that is used to apply on smooth concrete walls and ceilings. It provides a mechanical key for subsequent layers of cement and gypsum based plasters. Laborious hacking of concrete is no more necessary.

#### BONDING RUSH COAT LIGHT - BRC LGT

##### *Keycoat for aerated blocks . . .*

BRC LGT is a dry pre mix, mineral based bonding coat specially designed as a keycoat on aerated light weight blocks /calcium silicate blocks and normal fair faced concrete prior to plastering.

#### SAND CEMENT RENDER - SCR

##### *High quality cement lime plaster . . .*

SCR is a dry pre mix, cement lime plaster/render for internal and external use. This cement plaster is an ideal substrate for paint, wallpaper or decorative plasters. SCR can be applied with a suitable plastering machine or by hand in accordance to BSEN13914-1 & BSEN13914-2. A modern plaster system for economical and fast application on walls and ceilings.

#### CEMENT PLASTER/RENDER - CP2

##### *Versatile plaster . . .*

CP2 is a dry pre mix, cement plaster/render for internal and external use. This cement plaster is an ideal substrate for paint, wallpaper or decorative plasters. CP2 can be applied with a suitable plastering machine or by hand in accordance to BSEN13914-1 & 2 onto prepared concrete surface, block work as well as most mineral backgrounds.

#### CEMENT PLASTER/RENDER LIGHT - CP2 LGT

##### *Plastering solution for aerated blocks . . .*

CP2 LGT is a dry pre mix, cement plaster/render for internal and external use. It is specially designed for aerated light weight blocks and calcium silicate blocks. CP2 LGT can be applied with a suitable plastering machine or by hand.

#### CEMENT PLASTER - CP14

##### *Mono coat cement plaster . . .*

CP14 is a dry pre mix, cement plaster/render for internal and external use. This cement plaster is an ideal substrate for paint, wallpaper or decorative plasters. CP14 can be applied with a suitable plastering machine or by hand on to prepared concrete surface, blockwork as well as most mineral backgrounds.

#### CEMENT PLASTER LIGHT - CP14 LGT

##### *Mono coat cement plaster for aerated blocks . . .*

CP14 LGT is a dry pre mix, cement plaster/render for internal and external use. The plaster is an ideal substrate for paint, wallpaper or decorative plasters. CP14 LGT can be applied with a suitable plastering machine or by hand onto prepared AAC blocks, concrete surface, block work as well as most mineral backgrounds.



## LIST OF PRODUCTS

### GYPSUM LIME PLASTERS

#### GYPSUM LIME PLASTER - GLP1A

##### *Ideal internal plaster . . .*

GLP1A is a dry pre mix, gypsum lime plaster for use on internal walls and ceilings of rooms where normal humidity prevails. It combines ease of application with a smooth and aesthetic finish and is an ideal base for paints as well as wall papers. It can be applied with suitable plastering machine or by hand in accordance to BSEN13914-1:2005.



#### GYPSUM LIME VENEER PLASTER - GLVP

##### *For flawless finish . . .*

GLVP is a dry pre mix, single coat internal plaster for veneer fair faced finish onto Portland Cement rendered backgrounds, concrete, blockwork and gypsum plaster boards. It provides a durable and hygienic fairface finish ideal for painting or wall papering.



#### GYPSUM LIME PLASTER LIGHT - GLP LGT

##### *Thin coat for aerated blocks . . .*

GLP LGT is a dry pre mix, gypsum based, light weight thin coat plaster used on AAC blocks or calcium silicate blocks to level the surface.



### DECORATIVE PLASTERS

#### DECORATIVE PLASTER ROLL EASY - SP1

##### *Roller applied decorative finish . . .*

Roll Easy SP1 is a dry pre mix, heavy or light textured finishing coat. It is a roller application for external or internal finishes. Thickness is approximately 1-1.5mm. Available in various colours.



#### DECORATIVE PLASTER CONWAVE - SP2

##### *Medium textured decorative finish . . .*

Conwave SP2 is a dry pre mix, medium textured finishing coat. Special trowel application will provide a classic texture. Thickness is approximately 2-3mm. Available in various colours.



#### DECORATIVE PLASTER CONCOAT - SP3

##### *Fine textured decorative finish . . .*

Concoat SP3 is a dry pre mix, fine textured finishing coat. Different textures are possible using a spray-gun or trowel. Thickness is approximately 1.5-2mm. Available in various colours





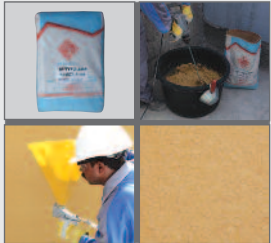
## LIST OF PRODUCTS



### **DECORATIVE PLASTER CONGLAZE - SP4**

#### ***Spray textured decorative finish . . .***

Conglaze SP4 is a dry pre mix, spray textured finishing coat, available in a variety of colours. A heavy texture can be obtained using a special technique. Thickness is between 4-5mm.



### **DECORATIVE PLASTER CONTOUR - SP TYROLEAN**

#### ***Tyrolean textured finish . . .***

SP Tyrolean is a dry pre mix, tyrolean textured finishing coat, available in a variety of colours. It is a classical spray finish applied by spray-gun or tyrolean box. Thickness as required or as specified.



### **DECORATIVE PLASTER - GLITTERLITE ®**

#### ***Ultimate sparkling finish . . .***

Glitterlite is a dry pre mix, decorative finish for internal and external use, giving a sparkling effect due to incorporated glass, silica sand and marble chips. These aggregates remain exposed on the surface by using a special application technique. The ultimate decorative coat for an impressive appearance and high weather resistance. Available in various colours and three exciting textures i.e. glass, silica, glass & silica.



### **DECORATIVE PLASTER - SCRATCH COAT**

#### ***Stone finish decorative render . . .***

Scratch Coat is a dry pre mix, pigmented decorative plaster that can be applied internally and externally. Being mineral based, it has a high water retention and breathing capacity and therefore, reduces condensation between plaster and the basic construction work. Available in various colours and textures.



### **DECORATIVE PLASTER - ERP**

#### ***Traditional arabic plaster . . .***

ERP is a pre mix, pigmented mineral based decorative plaster for internal and external application. It is designed to match the appearance for traditional Arabian houses and forts and combines it with the characteristics of modern building materials.



### **CONMIX HERITAGE PLASTER - CHP**

#### ***Heritage finish . . .***

Conmix CHP is a pre mix, pigmented, mineral based, thin coat decorative plaster for internal and external application. Various types of finishes can be achieved by using different techniques. Thickness of application is approximately 3-5mm.



## LIST OF PRODUCTS

### TILE ADHESIVES AND GROUTS

#### UNIVERSAL TILE GLUE - UTG

##### *Top grade tile adhesive . . .*

UTG is a dry pre mix, waterproof, cement based tile glue for thin-bed fixing of ceramic tiles on walls and floors. Long opening time and excellent workability ensure the fixing of even heavy tiles. Available in grey and white colour.

#### WATERPROOF TILE MORTAR - C800

##### *Highly polymer modified adhesive . . .*

C800 is a dry pre mix, waterproof, cement based thin bed adhesive for the fixing granite, vitrified tiles, glass mosaic, glass brick, ceramic wall and floor tiles. It is suitable for internal and external use and complies to ANSIA118.4:2005 and BSEN12004:2007.

#### CONMIX TILE ADHESIVE - CTA

##### *Ceramic tile adhesive . . .*

CTA is a dry pre mix, cementitious thin bed mortar for the fixing of ceramic walls and floor tiles. It has excellent adhesion, improved workability and is heat and water resistant. It is suitable for internal and external use.

#### WATERPROOF TILE ADHESIVE - C500

##### *Value for money . . .*

C500 is a dry pre mix, cement based thin bed tile adhesive. It can be used on ceramic tiles (group III-BS5385-1:2009) having water absorption (E) more than 10% ( $E > 10\%$ ). C500 white is advised to be used on stain prominent tiles.

#### TILE JOINT FILLER - TJF

##### *Multi featured tile grout . . .*

TJF is a dry pre mix, waterproof, cement based tile joint filler for internal and external use, available in a variety of colours, in Grade 'A' - joints upto 5mm and in Grade 'B' - joints from 5-12mm for wall and floor tiling.

### ACOUSTIC AND INSULATION PLASTERS

#### ACOUSTIC PLASTER - APP

##### *Stop the echo . . .*

APP is a dry pre mix, acoustic plaster to be applied internally on ceilings, soffits and upper parts of walls. APP should be applied with a spray technique to achieve a tyrolean like finish, which acts as an absorber of sound waves. It enables a comfortable level of conversation even in large domed areas and halls.

#### INSULATION PLASTER - IPC

##### *For thermal insulation. . .*

IPC is a dry pre mix, cement based plaster for internal/external application to provide thermal insulation of walls. It is an ideal substrate to receive subsequent coats such as decorative plasters and paints. Enormous energy savings possible by using IPC.



## LIST OF PRODUCTS

### CONMIX INSUBOND

#### *Adhesive for EIFS . . .*

Conmix Insubond is a dry pre mix, thin bed adhesive mortar specially formulated for gluing organic insulation boards against inorganic materials for use in both internal and external applications.

### SPECIALIZED MORTARS

#### SKIM COAT PLASTER - LC11

##### *Thin fairing coat . . .*

LC11 is a pre mix, fine sand cement mortar for internal and external use. It can be used as a thin coat finishing plaster or for localised repair work onto portland cement based backgrounds such as concrete or rendered surfaces.

#### DRESSING PLASTER - LC13

##### *Medium fairing coat . . .*

LC13 is a dry pre mix, cement lime plaster for internal or external application. Used as a finishing coat on concrete, blockwork or rendered surfaces. It can also be used for any kind of leveling or repair. Excellent bonding on cementitious substrates. This plaster is an ideal substrate for paint, wallpaper or decorative plasters.

#### CONMIX FLOOR SCREED (SC200 & SC200/10)

##### *Flooring made easy . . .*

Conmix Floor Screed is a dry pre mix, ready to use screed, ideal for use to level substrates prior to laying carpets, floor tiles etc.

#### CONMIX CONPUTTY

##### *Prelude to paint . . .*

Conmix Conputty is a dry pre mix, smooth finish, leveling compound for internal and external use. It is used to fill small voids, level and smoothen surface irregularities on concrete, sand cement render and various mineral backgrounds prior to the application of paint or wallpaper.

#### BLOCK LAYING MORTAR - CM4

##### *Factory mixed mortar . . .*

CM4 is a dry pre mix, sand cement mortar for laying masonry bricks or blocks. It has excellent workability and stability that enables fast working with blocks and bricks. CM4 is available with or without lime, complying to different European and American standards like BSEN998-1 class M5, M10 & M 15, ASTM C270 class N, S & M. CM4 is also available in different colours.

#### FITTING PLASTER - FPC

##### *Rapid setting fixing mortar . . .*

FPC is a dry pre mix, cement based mortar for fixing plaster stops, corner beads, recessed cables, fibre glass netting etc. It is for both internal and external use. It is fast setting with excellent addition to fittings and to the substrates. No more corrosion of nails and no delay in plaster works.





## LIST OF PRODUCTS

### **LIGHT WEIGHT BLOCK MORTAR - LWBM**

#### ***Thin bed mortar . . .***

LWBM is a dry pre mix, thin bed mortar specially designed for fixing Autoclaved Aerated Concrete blocks and Calcium Silicate blocks.

### **DRY PRE MIX CONCRETE - DPMC**

#### ***Any grade, any where, any time . . .***

DPMC is a dry pre mix concrete, packaged in 50 kg bags or 1000 kg Jumbo bags to use in all types of concrete applications. DPMC complies to the relevant BSEN and ASTM standards





# technical data

|  | Binder                | Packing                        | Bags/<br>Pallet  | Working Time             | Coverage/Bag*   | Curing                         |
|--|-----------------------|--------------------------------|------------------|--------------------------|---|--------------------------------|
| <b>CEMENT PLASTERS</b>                           |                       |                                |                  |                          |   |                                |
| Bonding Rush Coat - BRC                          | Portland Cement       | 50 Kg/bag                      | 40               | Approximately 45 minutes | 20m <sup>2</sup> at 2mm thickness   | Min. 48 hours by potable water |
| Bonding Rush Coat Light - BRC LGT                | White Portland Cement | 50 Kg/bag                      | 40               | Approximately 45 minutes | 20m <sup>2</sup> at 2mm thickness   | Min. 48 hours by potable water |
| Sand Cement Render - SCR                         | Portland Cement       | 50 Kg/bag                      | 40               | Approximately 30 minutes | 2m <sup>2</sup> at 15mm thickness   | Min. 48 hours by potable water |
| Cement Plaster / Render - CP2                    | Portland Cement       | 50 Kg/bag                      | 40               | Approximately 30 minutes | 2m <sup>2</sup> at 15mm thickness   | Min. 48 hours by potable water |
| Cement Plaster/Render Light - CP2 LGT            | Portland Cement       | 50 Kg/bag                      | 40               | Approximately 30 minutes | 3.2m <sup>2</sup> at 10mm thickness   | Min. 48 hours by potable water |
| Cement Plaster - CP14                            | Portland Cement       | 50 Kg/bag                      | 40               | Approximately 30 minutes | 3.2m <sup>2</sup> at 10mm thickness   | Min. 48 hours by potable water |
| Cement Plaster Light- CP14 LGT                   | Portland Cement       | 50 Kg/bag                      | 40               | Approximately 30 minutes | 3.4m <sup>2</sup> at 10mm thickness   | Min. 48 hours by potable water |
| <b>GYPSUM LIME PLASTERS</b>                      |                       |                                |                  |                          |   |                                |
| Gypsum Lime Plaster - GLP1A                      | Hemi-hydrated Gypsum  | 40 Kg/bag                      | 45               | Approximately 40 minutes | 2.5m <sup>2</sup> at 13mm thickness   | Should not be water cured      |
| Gypsum Lime Veneer Plaster- GLVP                 | Hemi-hydrated Gypsum  | 25 Kg/bag                      | 50               | Approximately 40 minutes | 5.75m <sup>2</sup> at 4mm thickness   | Should not be water cured      |
| Gypsum Lime Plaster Light - GLP LGT              | Hemi-hydrated Gypsum  | 25 Kg/bag                      | 50               | Approximately 40 minutes | 5.5m <sup>2</sup> at 5mm thickness  | Should not be water cured      |
| <b>DECORATIVE PLASTERS</b>                       |                       |                                |                  |                          |   |                                |
| Decorative Plaster Roll Easy - SP1               | White Portland Cement | 50 Kg/bag                      | 40               | Approximately 45 minutes | 26m <sup>2</sup> at 1.5mm thickness   | Min. 48 hours by potable water |
| Decorative Plaster Conwave - SP2                 | White Portland Cement | 50 Kg/bag                      | 40               | Approximately 45 minutes | 13m <sup>2</sup> at 2.5mm thickness   | Min. 48 hours by potable water |
| Decorative Plaster Concoat - SP3                 | White Portland Cement | 50 Kg/bag                      | 40               | Approximately 45 minutes | 22m <sup>2</sup> at 1.5mm thickness   | Min. 48 hours by potable water |
| Decorative Plaster Conglaze - SP4                | White Portland Cement | 50 Kg/bag                      | 40               | Approximately 45 minutes | 7.5m <sup>2</sup> at 4mm thickness  | Min. 48 hours by potable water |
| Decorative Plaster Contour - SP Tyrolean         | White Portland Cement | 50 Kg/bag                      | 40               | Approximately 45 minutes | 10m <sup>2</sup> at 4-5mm thickness   | Min. 48 hours by potable water |
| Decorative Plaster Glitterlite®                  | White Portland Cement | 50 Kg/bag                      | 40               | Approximately 40 minutes | 4.5m <sup>2</sup> at 5mm thickness  | Min. 48 hours by potable water |
| Decorative Plaster Scratch Coat                  | White Portland Cement | 50 Kg/bag                      | 40               | Approximately 40 minutes | 1.6m <sup>2</sup> at 18mm thickness   | Min. 48 hours by potable water |
| Decorative Plaster Traditional Plaster - ERP     | White Portland Cement | 50 Kg/bag                      | 40               | Approximately 40 minutes | 1.7m <sup>2</sup> at 18mm thickness   | Min. 48 hours by potable water |
| Decorative Plaster Conmix Heritage Plaster - CHP | White Portland Cement | 50 Kg/bag                      | 40               | Approximately 45 minutes | 10.2m <sup>2</sup> at 3mm thickness   | Min. 48 hours by potable water |
| <b>TILE ADHESIVE &amp; GROUTS</b>                |                       |                                |                  |                          |   |                                |
| Universal Tile Glue - UTG                        | Portland Cement       | 25 Kg/bag                      | 50               | Approximately 45 minutes | 6m <sup>2</sup> at 3mm thickness  | -                              |
| Waterproof Tile Mortar - C800                    | White Portland Cement | 25 Kg/bag                      | 50 bags of 25 kg | Approximately 30 minutes | 6m <sup>2</sup> at 3mm thickness  | Min. 48 hours by potable water |
| Conmix Tile Adhesive - CTA                       | Portland Cement       | 40 Kg/bag                      | 40               | Approximately 45 minutes | 9m <sup>2</sup> at 3mm & 5.5m <sup>2</sup> at 5mm thickness                 | -                              |
| Waterproof Tile Adhesive - C500                  | Portland Cement       | 25 Kg/bag                      | 50               | Approximately 30 minutes | 7.5m <sup>2</sup> at 3mm & 4.5m <sup>2</sup> at 5mm thickness               | -                              |
| Tile Joint Filler - TJF                          | White Portland Cement | 2 & 25 Kg/bag                  | 50 bags of 25 kg | Approximately 30 minutes | Type A=18.5 ltrs/25 Kg bag<br>Type B=18 ltrs/25 Kg bag                      | -                              |
| <b>ACOUSTIC &amp; INSULATION PLASTERS</b>        |                       |                                |                  |                          |   |                                |
| Acoustic Plaster - APP                           | Hemi-hydrated Gypsum  | 20 Kg/bag                      | 50               | Approximately 30 minutes | 2.6m <sup>2</sup> at 12mm thickness   | Should not be water cured      |
| Insulation Plaster - IPC                         | Portland Cement       | 20 Kg/bag                      | 50               | Approximately 45 minutes | 0.625m <sup>2</sup> at 40mm thickness                                       | Min. 48 hours by potable water |
| Conmix Insubond                                  | Portland Cement       | 50 Kg/bag                      | 40               | Approximately 30 minutes | 5.5m <sup>2</sup> at 6mm thickness  | Min. 48 hours by potable water |
| <b>SPECIALIZED MORTARS</b>                       |                       |                                |                  |                          |   |                                |
| Skim Coat Plaster - LC11                         | Portland Cement       | 25 Kg/bag                      | 50               | Approximately 45 minutes | 4.25m <sup>2</sup> at 4mm thickness   | Min. 48 hours by potable water |
| Dressing Plaster - LC13                          | Portland Cement       | 50 Kg/bag                      | 40               | Approximately 40 minutes | 6.8m <sup>2</sup> at 5mm thickness  | Min. 48 hours by potable water |
| Conmix Floor Screed - SC200 & SC200/10           | Portland Cement       | 50Kg/bag                       | 40               | Approximately 45 minutes | 1.3m <sup>2</sup> at 20mm thickness   | Min. 72 hours by potable water |
| Conmix Conputty                                  | White Portland Cement | 5 & 20 Kg/bag                  | 50 bags of 20kg  | Approximately 45 minutes | 8m <sup>2</sup> / 5 Kg bag at 0.5mm & 34m <sup>2</sup> / 20 Kg bag at 0.5mm | Min. 48 hours                  |
| Block Laying Mortar - CM4                        | Portland Cement       | 50 Kg/bag                      | 40               | Approximately 30 minutes | 32 ltrs/50 Kg bag   | Min. 48 hours by potable water |
| Fitting Plaster - FPC                            | Portland Cement       | 50 Kg/bag                      | 40               | Approximately 10 minutes | 30 ltrs/bag   | Min. 48 hours by potable water |
| Light Weight Block Mortar - LWBM                 | Portland Cement       | 50 Kg/bag                      | 40               | Approximately 45 minutes | 34 ltrs/bag   | -                              |
| Dry Pre Mix Concrete - DPMC                      | Portland Cement       | 50 Kg/bag<br>1000 Kg/Jumbo bag | 40               | Approximately 45 minutes | 34 ltrs/bag   | Min. 7 days by potable water   |

\* Typical results under laboratory conditions.  
\*\* All products are manufactured to meet BS-EN & ASTM Standards.



*Building History*

## **CONMIX LTD.**

P.O. Box 5936, Sharjah, U.A.E.

e-mail: [conmix@conmix.com](mailto:conmix@conmix.com)

[www.conmix.com](http://www.conmix.com)

### **Head Office**

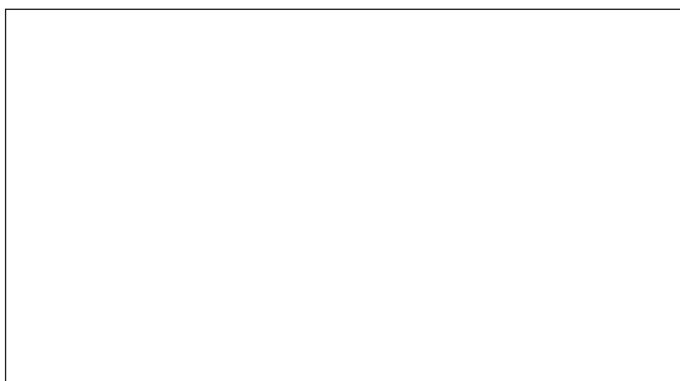
Tel.: +971 6 531 41 55

Fax: +971 6 531 43 32

### **Sales Office**

Tel.: +971 6 568 24 22

Fax: +971 6 568 14 42



The information given in this leaflet is to the best of our knowledge true and reliable. Conmix Limited will not be responsible for any difficulties and liabilities arising from other material conditions, incorrect application or workmanship. Field service where provided does not constitute supervisory responsibility. Our guarantee is therefore limited to the quality of materials delivered.